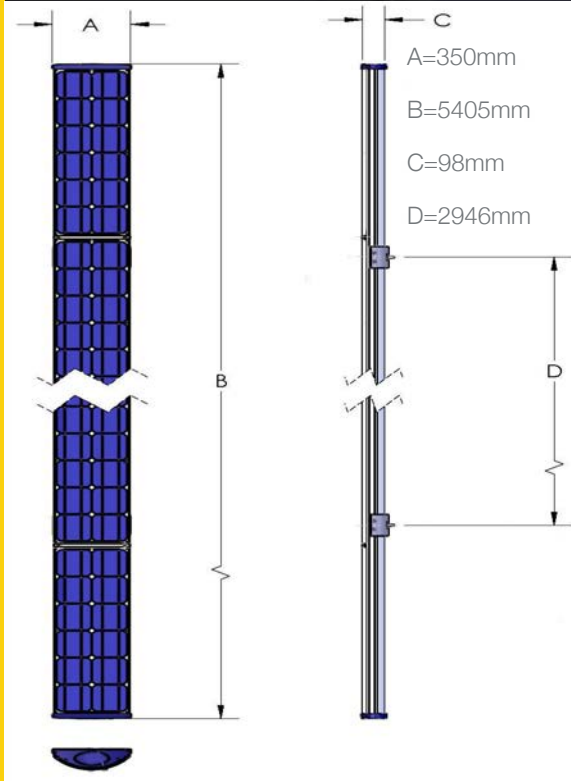
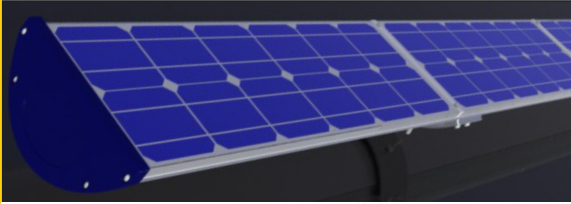


LB-285AC LITEbeam™



Product

The Wattlots LB-285AC LITEbeam Module is a complete energy system. Its frame is constructed of high strength, lightweight aluminum and can span a distance of 3m without additional structural support.

Adaptability

Each individual module is equipped with an Exeltech micro inverter and provides intelligence and fully networked communication right within the framework of the module. This feature allows for the adaption of additional electronic devices, either AC or DC such as lighting, security components, data collection receivers and other plug and play style equipment.

The LB-285AC is ideal for applications in public spaces such as parking facilities, building integration, and other applications where traditional shape glass panels are not compatible. Wattlots modules, unlike traditional PV panels, do not have high voltage DC outputs and are much safer both during installation and operation. The AC output produced by the module is the same as what is found at any AC outlet.

Design and specifications are subject to change without notice. Contact Wattlots to obtain current product manuals and specifications before using any device. Panels are not for individual use.

WATTLOTS

Like nothing else under the sun.

Preliminary Module Specifications

DC Electrical Characteristics

Maximum Power (Pmax)*	285W
Tolerance of Pmax	+/-3%
Type of Cell	Monocrystalline silicon
Cell Array	66 cells in series

*Measured at (STC) Standard Test Conditions: 25°C, 1 kW/m² insolation, AM 1.5 DC wiring sealed inside module.

AC Electrical Characteristics

Integrated Inverter	Exeltech
Maximum Output Power	216W
Nominal Output Current	1.8A
Nominal Output Voltage	120VAC
Nominal Frequency	60Hz
Power Factor	>0.99
Peak Inverter Efficiency	95.8%
GEC Weighted Efficiency	94.5%
Communications	Powerline

Mechanical Characteristics

Dimensions	338mm x 5405mm x 98mm
Weight	36 kg/79 Lbs.

Compliance

Solar Panel	UL1703
Inverter	UL1741/IEEE1547
	FCC Part 15 Class B

Warranty

Module	20 years
--------	----------